

INFECTIOUS DISEASES: *A Course for Clinicians*



NATIONAL FOUNDATION
FOR INFECTIOUS DISEASES
4733 BETHESDA AVE., SUITE 750
BETHESDA, MD 20814-5278
301-656-0003

Non-Profit Org.
U.S. Postage
PAID
Frederick, MD
Permit No. 110

Who Should Attend

- Primary Care Physicians
 - Family Physicians
 - Internal Medicine Specialists
 - Pediatricians
- Infectious Disease Specialists
- Emergency Care Providers
- Nurses
- Nurse Practitioners
- Physician Assistants
- Pharmacists
- Public Health Specialists
- Clinical Microbiologists
- Other Health Care Professionals
with Special Interest in Infectious Diseases

Course Objectives

This course will provide the latest clinical and epidemiologic information on important infectious diseases and infectious disease syndromes. At the conclusion of this course participants should be able to meet session-specific objectives listed with each session in the program.



INFECTIOUS DISEASES: *A Course for Clinicians*

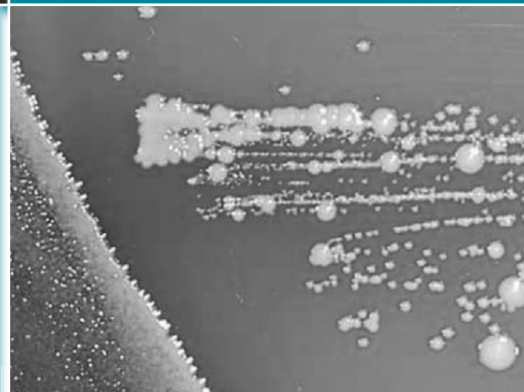


FEBRUARY 18-20, 2005
(PRESIDENT'S DAY WEEKEND)

Hilton Hawaiian Village
Beach Resort and
Queen's Conference Center
Honolulu, Hawaii

Sponsored by:
National Foundation
for Infectious Diseases
University of Hawaii
John A. Burns School of Medicine
and
The Cleveland Clinic Foundation

In Partnership With:
Queen's Medical Center
The Hawaii Medical Association
The Hawaii Department of Health
Tripler Army Medical Center



COURSE OVERVIEW

This course focuses on the epidemiology, recognition, therapy, and management of important infectious diseases. Expert faculty will provide the latest information on both current and prospective therapeutic agents through lectures and interactive case presentations. Leading infectious disease experts from around the country complement the University of Hawaii John A. Burns School of Medicine, the Cleveland Clinic Foundation, and the National Foundation for Infectious Diseases staff to present pertinent information on current and emerging infectious disease problems.

This course is specifically designed for physicians, nurses, physician assistants, nurse practitioners, pharmacists, microbiologists, and other health professionals involved with or interested in the epidemiology, diagnosis, and treatment of infectious diseases. It will also be of interest to health care professionals involved in the prevention and control of infectious diseases, such as federal, state, and local public health officials. Course participants should have a knowledge of or interest in infectious diseases.

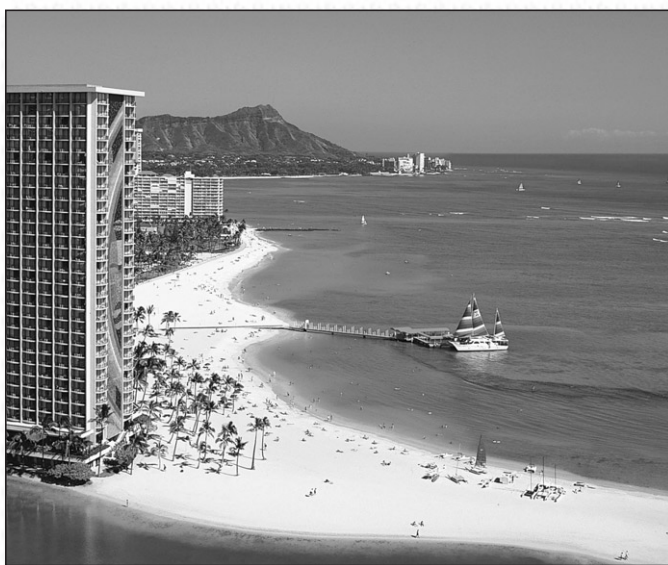
Course Format

Each presentation will emphasize an interactive format with problem-based learning and case presentations where appropriate. The attendees will be encouraged to utilize an audience response system and participate in a lively and stimulating question and answer discussion.

Location

Hilton Hawaiian Village Beach Resort

2005 Kalia Road
Honolulu, Hawaii 96815
808-949-4321



Queen's Conference Center

510 Beretania Street
Honolulu, Hawaii 96813
808-535-8800

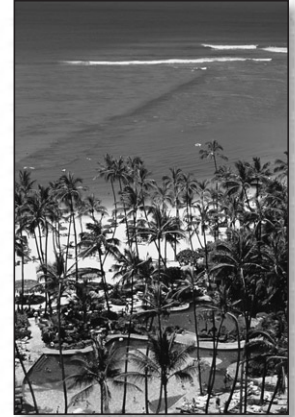
Acknowledgement

Multiple funding sources are currently being solicited to provide unrestricted educational grants in support of this clinical course. Specific names of individual supporters will be provided in the course syllabus.

Accreditation

Continuing Medical Education Credits

The National Foundation for Infectious Diseases (NFID) is accredited by the Accreditation Council for Continuing Medical Education (ACCME) to provide Continuing Medical Education (CME) for physicians. NFID takes responsibility for the content, quality, and scientific integrity of this CME activity. NFID designates this CME activity for a maximum of 16.5 Category 1 credits toward the AMA Physician's Recognition Award. Each physician should claim only those hours of credit that he/she actually spent in the educational activity.



AAFP Prescribed Credits

This activity has been reviewed and is acceptable for up to 17.75 Prescribed credits by the American Academy of Family Physicians.

Continuing Education for Nurses

PharmCon has been approved as a provider of Continuing Education for Nurses by the Maryland Nurses Association that is accredited as an approver of continuing education in nursing by the American Nurses Credential Center's Commission on Accreditation and the California Board of Registered Nursing. The number assigned to this program is N-021805-166-L04. In order to receive credit for this program, each participant must attend the entire program and complete an evaluation form that must be turned in to the program representative at the end of each day. Participants can earn up to a maximum of 16.5 credit hours. Certificates will be mailed to program participants in approximately four to six weeks.

Continuing Pharmacy Education Credits

PharmCon is accredited by the Accreditation Council for Pharmacy Education as a provider for continuing pharmacy education. The ACPE number assigned to the program is 798-999-04-067-L04 (Original Date of Issue: 8/25/04; Expiration Date of ACPE#: 8/25/07). In order to receive credit for this program, each participant must attend the entire program and complete an evaluation form that must be turned into the program representative at the end of each day. Participants can earn up to a maximum of 16.5 credit hours. Statements of Credit will be mailed to program participants in approximately four to six weeks.



FACULTY

Course Co-Chairs

Susan J. Rehm, M.D.
Staff Physician
Department of Infectious Diseases
The Cleveland Clinic Foundation
Cleveland, Ohio
Medical Director
National Foundation for Infectious Diseases
Bethesda, Maryland

Alan D. Tice, M.D.
Infectious Disease Specialist
Infections Limited Hawaii
Associate Professor
John A. Burns School of Medicine
University of Hawaii
Honolulu, Hawaii

Faculty*

Maqsudul Alam, Ph.D.
Professor
Department of Microbiology
University of Hawaii
Honolulu, Hawaii

Lawrence Eron, M.D.
Associate Professor of Medicine
John A. Burns School of Medicine
University of Hawaii
Kaiser Moanalua Medical Center
Honolulu, Hawaii

Thomas M. File, Jr., M.D.
Professor of Internal Medicine
Northeastern Ohio University
College of Medicine
Chief, Infectious Disease Service
Division of Infectious Diseases
Summa Health System
Akron, Ohio

Susan L. Fraser, M.D.
Chief, Infectious Diseases
Tripler Army Medical Center
Honolulu, Hawaii

Roger S. Fujioka, Ph.D.
Research Professor
Water Resources Research Center
University of Hawaii
Honolulu, Hawaii

Duane J. Gubler, Sc.D.
Director
Asia-Pacific Institute of Tropical
Medicine
and Infectious Diseases
University of Hawaii, Manoa
Honolulu, Hawaii

Alan R. Katz, M.D., M.P.H.
Associate Professor
John A. Burns School of Medicine
University of Hawaii
Honolulu, Hawaii

**Faculty subject to change*

Ronald Lee Nichols, M.D.
*William Henderson Professor
of Surgery, Emeritus*
*Professor of Microbiology and
Immunology*
Department of Surgery
Tulane University School of
Medicine
New Orleans, Louisiana

George A. Pankey, M.D.
Director
Infectious Disease Research
Ochsner Clinic Foundation
New Orleans, Louisiana

Sarah Y. Park, M.D.
Deputy Director
Disease Outbreak Control
Division
Hawaii Department of Health
Honolulu, Hawaii

Larry K. Pickering, M.D.
Professor of Pediatrics
Emory University School of
Medicine
Senior Advisor to the Director
National Immunization Program
Centers for Disease Control and
Prevention
Atlanta, Georgia

Gary W. Procop, M.D.
Section Head
Clinical Microbiology
The Cleveland Clinic Foundation
Cleveland, Ohio

Steven K. Schmitt, M.D.
Staff Physician
Associate Hospital
Epidemiologist
Department of Infectious
Diseases
The Cleveland Clinic Foundation
Cleveland, Ohio

Cecilia M. Shikuma, M.D.
Associate Professor of Medicine
John A. Burns School of
Medicine
University of Hawaii, Manoa
Honolulu, Hawaii

Alan J. Taege, M.D.
Co-Director, HIV Clinic
Department of Infectious
Diseases
The Cleveland Clinic Foundation
Cleveland, Ohio

J. Walton Tomford, M.D.
Staff Physician
Department of Infectious
Disease
The Cleveland Clinic Foundation
Cleveland, Ohio

ACCOMMODATIONS, ATTRACTIONS & TRAVEL

Hotel Accommodations

A limited number of guest rooms have been reserved at the Hilton Hawaiian Village Beach Resort for course participants at the rate listed below. To make a reservation, call toll-free reservations line at (800) HILTONS (800-445-8667) and tell the agent that you are attending the National Foundation for Infectious Diseases Clinical Course being held February 18–20, 2005.

Hilton Hawaiian Village Beach Resort
2005 Kalia Road
Honolulu, HI 96815
(808) 949-4321
\$185 per night, single/double
(plus applicable tax, currently 11.41%)

To guarantee the special rate, make your reservation as soon as possible but no later than **January**

16, 2005. After this date, reservations will be accepted on a space and rate-available basis only.

Transportation

BY PLANE:

Honolulu International Airport is located approximately five miles from the Hilton Hawaiian Village Beach Resort. Taxi service between the airport and the hotel is available for approximately \$25 one-way. Several limousine services are available to the hotel from the airport. The Waikiki Airport Shuttle is available 24-hours per day for \$24 roundtrip or \$12 one-way. Reservations may be made in advance by calling VIP Transportation toll-free at (866) 836-0317 or directly at (808) 836-0317. You may also purchase a ticket when you arrive at the Waikiki Airport Shuttle kiosk on the baggage claim level of the airport.

BY CAR:

From Honolulu International Airport, take H-1 Freeway East, to Honolulu. Once on the freeway, look for Waikiki directional signs and stay in the right lane. You will exit onto Nimitz Highway. Stay on Nimitz Highway, which will change into Ala Moana Blvd., for about 15 minutes. You will pass Ala Moana Shopping Center on your left, Ala Moana Beach Park on your right, go over a short bridge, then watch for the Hilton Hawaiian Village sign on your right in about 2 blocks. Stay in the right lane. Turn right on Kalia Road (right after the sign - you'll see 3 bronze statues to your right as you round the corner). Go 200 feet, turn right into the hotel driveway.

Parking is available for \$12 overnight (self-park) and \$17 for overnight (valet).

Attractions

Tour of Leprosarium on Molokai:

Tour Kalaupapa, the place where lepers were sent in the days when medical science could not help them. On the island of Molokai, the lepers found the compassion of Father Damian and his hospital. For additional information and to schedule a tour contact www.fatherdamian.qpg.com or call (808) 567-6171 or (808) 523-0941.

Great Aloha Run:

The 21st Annual Great Aloha Run will be held on Monday, February 20, 2005 (President's Day) to benefit Carole Kai Charities which has provided over \$5.2 million to more than 100 charitable organizations in Hawaii. For more information and to register for the Great Aloha Run visit www.greataloharun.com

PRELIMINARY PROGRAM

FRIDAY

FEBRUARY 18, 2005

HILTON HAWAIIAN
VILLAGE HOTEL

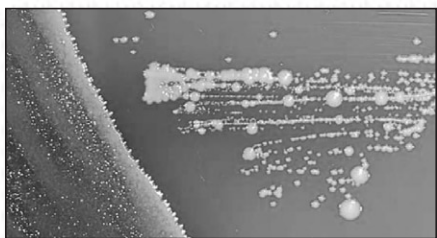
7:00 am-12:00 pm Registration
7:30 am Continental Breakfast
7:55 am **Welcome and Introductions**
Susan J. Rehm, M.D. and
Alan D. Tice, M.D.

SESSION 1

Updates in Common Infectious Diseases

At the conclusion of this session, participants should be able to meet the following objectives:

- Describe updated treatment regimens for community-acquired pneumonia
- List the most common causes of gastroenteritis related to food
- Select appropriate antibiotics and duration of therapy for infections due to the usual urinary tract pathogens
- Demonstrate understanding of community-associated MRSA infections and their management



8:00 am-8:30 am
Respiratory Tract Infections
Thomas M. File, Jr., M.D.

8:30 am-9:00 am
Foodborne Diseases
Alan J. Taege, M.D.

9:00 am-9:30 am
Genitourinary Tract Infections
Steven K. Schmitt, M.D.

9:30 am-10:00 am
Skin and Soft Tissue Infections
Ronald L. Nichols, M.D.

10:00 am-10:30 am
Coffee Break

SESSION 2

Developments in Management of Infections

At the conclusion of this session, participants should be able to meet the following objectives:

- Explain the indications for wound cultures in the management of diabetic foot infections
- Name three new issues related to treatment of infections in pediatric patients
- Understand the side effects and indications for use of new antifungal agents
- Select appropriate antiviral therapy for patients with influenza and those with herpesvirus infections

10:30 am-11:00 am
**Musculoskeletal Infections/
Diabetic Foot Infections**
J. Walton Tomford, M.D.

11:00 am-11:30 am
What's New in Pediatric Infectious Diseases
Larry Pickering, M.D.

11:30 am-12:00 pm
Management of Fungal Infections
George A. Pankey, M.D.

12:00 pm-12:30 pm
**Management of Viral Infections
Other Than HIV**
Thomas M. File, Jr., M.D.

12:30 pm
Adjournment

Clinical Workshops *(Optional)*

QUEEN'S HOSPITAL

Shuttle Bus service provided from the hotel to the workshop venue, and back to the hotel at the end of the workshop (A detailed agenda, including faculty affiliations, will be disseminated at the time of the workshop)

2:00 pm-4:00 pm
**WORKSHOP 1:
Infection Control in
Ambulatory Care**

Steven K. Schmitt, M.D., Susan Slavish, R.N.

At the conclusion of this session, participants should be able to meet the following objectives:

- Determine the appropriate use of gloves and hand washing in the office
- Understand patient triage according to infection risk and use of masks

- Know how to prevent spreading of infectious agents in the waiting room and improve vaccination rates

2:00 pm-4:00 pm
**WORKSHOP 2:
Microbiology**

Gary W. Procop, M.D., Francis Pien, M.D.

At the conclusion of this session, participants should be able to meet the following objectives:

- Describe what a Gram stain really looks like, the initial plating techniques, and limitations of automated identification and susceptibility testing
- Understand how to test for MRSA and VRSA and explain rapid diagnostic techniques for the office and rapid testing for influenza

Dinner Presentation *(Optional)*

Additional fee charged for dinner.

At the conclusion of this presentation, participants should be able to meet the following objectives:

- List artists, musicians, and scientists who had tuberculosis
- Describe three historic treatments for tuberculosis
- Explain the highlights in the development of antimicrobial therapy specific to tuberculosis

6:00 pm-8:00 pm
**Lecture Presentation:
Tuberculosis: Past, Present and Future**
J. Walton Tomford, M.D.

SATURDAY

FEBRUARY 19, 2005

QUEEN'S MABEL SMYTH
CONFERENCE CENTER

Shuttle Bus service provided from the hotel to the Queen's Conference Center

7:15 am-8:00 am
Continental Breakfast and Exhibits

SESSION 3

National and International Influences

At the conclusion of this session, participants should be able to meet the following objectives:

- Recognize the manifestations of West Nile Virus

- Find learning tools to identify unusual diseases acquired in distant countries
- Describe recent changes in vaccination recommendations for children and adults
- Identify human pathogens associated with recreational water use



8:00 am-8:30 am
Vector-Borne Diseases
Duane J. Gubler, Sc.D.

8:30 am-9:00 am
Infections in Returning Travelers and Servicemen/Servicewomen
Susan L. Fraser, M.D.

9:00 am-9:30 am
New Recommendations for Pediatric and Adult Immunization
Larry K. Pickering, M.D. and Susan J. Rehm, M.D.

9:30 am-10:00 am
Water-borne Diseases
Roger S. Fujioka, Ph.D.

10:00 am-10:30 am
Coffee Break and Exhibits

SESSION 4

The Scene in Hawaii

At the conclusion of this session, participants should be able to meet the following objectives:

- Outline the antibiotic resistance pattern of bacteria commonly found in Hawaii
- Identify patients at risk for acquiring HIV
- Discuss trends in prevention and treatment of hepatitis B
- Determine whether a hepatitis C-infected patient is a candidate for therapy
- Identify risk groups most likely to have quinolone-resistant gonorrhea

10:30 am-11:00 am
Surveillance for Antimicrobial Resistance in Hawaii
Sarah Y. Park, M.D.

11:00 am-11:30 am
Progress in Understanding HIV
Cecilia M. Shikuma, M.D.

11:30 am-12:00 pm
Hepatitis B and C: The Silent Epidemics
Alan D. Tice, M.D.

12:00 pm-12:30 pm
Sexually Transmitted Diseases in Paradise
Alan R. Katz, M.D.

12:30 pm-1:30 pm
Lunch and Exhibits

Clinical Workshops *(Optional)*

QUEEN'S HOSPITAL

(A detailed agenda, including faculty affiliations, will be disseminated at the time of the workshop)

1:30 pm-3:30 pm
**WORKSHOP 3:
Wound Care**
Patricia Slachta, R.N., Victor Hay-roe, M.D.

At the conclusion of this session, participants should be able to meet the following objectives:

- Understand when to use antibiotics
- List the variety of topical dressings to use
- Understanding when and how to culture

1:30 pm-3:30 pm
**WORKSHOP 4:
Computer Applications**
Steven K. Schmitt, M.D., Sean Thomas, M.D., Alan D. Tice, M.D.

At the conclusion of this session, participants should be able to meet the following objectives:

- Identify programs available for information about antibiotic indications, side effects and costs
- Understand when a PDA is most useful
- Interpret quality assurance measures

SUNDAY FEBRUARY 20, 2005

7:30 pm-8:00 am
Continental Breakfast

SESSION 5

Practice Issues and Innovations

At the conclusion of this session, participants should be able to meet the following objectives:

- Select the appropriate type and duration of antimicrobial therapy for common infections
- Interpret antimicrobial susceptibility test results

- Manage infections in a variety of settings, minimizing the need for care in a hospital
- Prevent common infectious complications in immunocompromised patients and recognize signs and symptoms of opportunistic infections
- Recognize important dermatologic manifestations of localized and systemic infections

8:00 am-8:30 am
Antibiotic Selection and Use
Alan D. Tice, M.D.

8:30 am-9:00 am
Outpatient Management of Patients with Infections
Lawrence Eron, M.D.

9:00 am-9:30 am
Primary Care of the Immunocompromised Patient
Alan J. Taegge, M.D.

9:30 am-10:00 am
Dermatologic Manifestations and Infectious Diseases
George A. Pankey, M.D.

10:00 am-10:30 am
Coffee Break

SESSION 6

The Future

At the conclusion of this session, participants should be able to meet the following objectives:

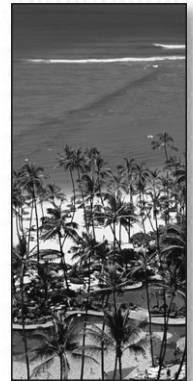
- Name at least four emerging or re-emerging infections and describe their epidemiology
- Describe new and rapid techniques for identification of bacteria
- Recognize the role of extremophiles in the environment and in disease

10:30 am-11:00 am
Emerging Infections
Susan J. Rehm, M.D.

11:00 am-11:30 am
Rapid Diagnosis: The Role of the Microbiology Laboratory
Gary W. Procop, M.D.

11:30 am-12:00 pm
Extremophiles – Living on the Edge
Maqsudul Alam, Ph.D.

12:00 pm-12:15 pm
Evaluation and Adjournment



On or Before January 17, 2005

Early Registration Fee\$400
Physicians-in-Training Early Registration Fee*\$50
Saturday Only\$150

After January 17, 2005

Registration Fee\$450
Physicians-in-Training*\$75
Saturday Only\$175

To qualify for the early Registration Fee, a **complete registration form with payment** must be received at the NFID office before 5 p.m. Eastern Time on **January 17, 2005**. Registrations or payments received after **January 17, 2005** will be subject to the higher rate.

**Includes medical students, residents, fellows, physician assistants and nurse practitioners. To be approved for the reduced registration fee, verification of status must be provided in the form of a letter from your program director.*

The registration fee, which must be paid in advance, includes a course syllabus, continental breakfasts on Friday, Saturday, and Sunday, lunch on Saturday and all refreshment breaks. Additional meals and accommodations are not included.

To register, complete the registration form and return it with the appropriate payment. Purchase orders cannot be accepted. Confirmation notices will be forwarded within two weeks upon receipt of completed registration and payment.

A dinner presentation is scheduled for Friday, February 18, 6:00 pm-8:00 pm., at the Hilton Hawaii Village Beach Resort. Dinner will consist of a three course meal followed by a lecture presentation. An additional fee of \$20 per person is required. To register, check the appropriate box on the registration form.

Workshops will be held on Friday and Saturday afternoon at the Queen's Hospital. Workshop attendance is optional; however, if you are planning to attend a workshop, please check the appropriate box on the registration form. Workshops without adequate participation will be cancelled.

- **Credit Cards:** If you are paying by credit card, you may register securely online at <http://www.nfid.org/conferences/idcourse05>, fax your registration to (301) 907-0878, or mail it to the address below. We are unable to accept telephone registrations.
- **Check or Money Order:** Checks (drawn on a U.S. bank only) and/or money orders must be made in U.S. dollars, made payable to **NFID**, and mailed with the registration form to the address below.

For further information, please contact Sheena L. Majette or Sharon Cooper-Kerr at the address or telephone number listed on the registration form.

INFECTIOUS DISEASES: A COURSE FOR CLINICIANS

Hilton Hawaii Village Beach Resort and Queen's Conference Center • Honolulu, Hawaii
(Please print clearly or type; photocopy for additional registrants.)

Last name		First name		Middle initial	
Professional title				Affiliation	
Primary Degree(s) (e.g., M.D., Ph.D., Pharm.D. R.N., etc.):					
Primary specialty (e.g. immunology, infectious diseases, clinical research, etc)					
Mailing address					
Mailing address					
City		State		Zip+4/postal code	
Country		Daytime telephone		Fax number	
E-mail address		E-mail address		E-mail address	

I do not wish my contact information to appear on the Participant List to be distributed at the course.

SPECIAL NEEDS

Please list any special meeting needs or requirements you may have in the space below, or contact Sharon Cooper-Kerr at 301-656-0003, Ext 19 or idcourse@nfid.org:

PAYMENT (Please check all that apply)

- \$400 EARLY BIRD
- \$50 EARLY BIRD (PHYSICIANS IN TRAINING)
- \$150 EARLY BIRD (SATURDAY ONLY)
- \$450 (AFTER JANUARY 17)
- \$75 (PHYSICIANS IN TRAINING)
- \$175 (SATURDAY ONLY)
- I plan to attend the dinner presentation and have included the additional \$20/per person for a total of _____ person(s)
- Check or money order drawn on U.S. funds (made payable to NFID) enclosed in the amount of \$ _____
- Please bill my credit card in the amount of \$ _____
Check type of card Visa MasterCard American Express
- Please include a receipt along with my confirmation notice

Name as printed on card	
Card number	Expiration date
Signature	
Billing address (if different from registrant's mailing address)	

WORKSHOP ATTENDANCE

I plan to attend the following workshops:

- Friday, February 18, 2005, 2:00 pm – 4:00 pm**
- Workshop 1: Infection Control in Ambulatory Care
 - Workshop 2: Microbiology
- Saturday, February 19, 2005, 1:30 pm – 3:30 pm**
- Workshop 3: Wound Care
 - Workshop 4: Computer Applications

SEND TO:

National Foundation for Infectious Diseases
Infectious Diseases: A Course for Clinicians
4733 Bethesda Avenue, Suite 750
Bethesda, MD 20814-5278

CALL: (301) 656-0003, ext. 19
FAX: (301) 907-0878
E-MAIL: idcourse@nfid.org
Visit our web site: <http://www.nfid.org>

NFID, the Cleveland Clinic Foundation, and/or the University of Hawaii reserve the right to cancel this course at any time. In the event of a cancellation of the course, the full registration fee will be returned to the registrant.

CANCELLATION POLICY: Refunds minus a \$75 administrative fee will be granted only if *written notification* arrives at the NFID office prior to 5 p.m., Eastern Time, on January 24, 2005. There will be no refunds for cancellations made after January 24, 2005. Substitutions will be allowed, but please notify us at the earliest possible time.